



Collect

Connect

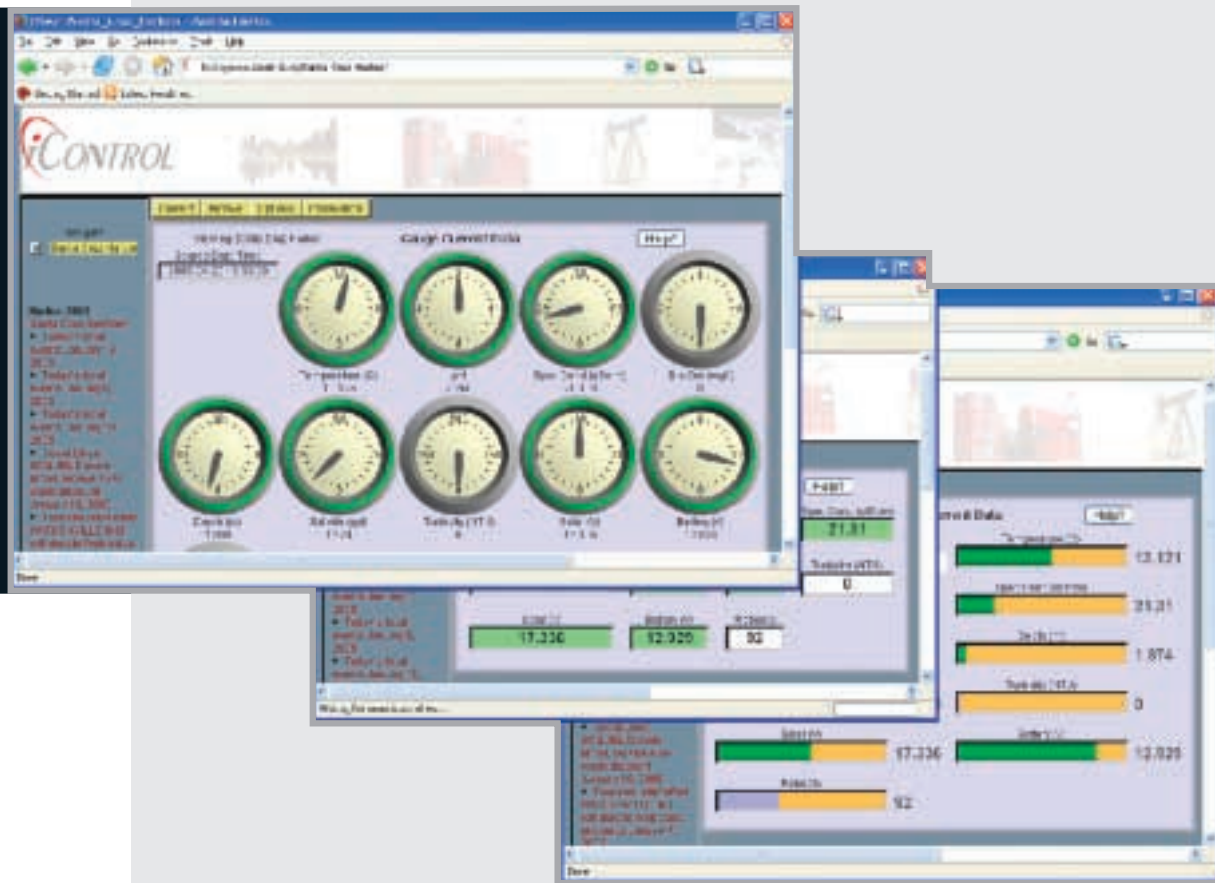
Control

## iVIEW™

The final step of iControl's Collect/Connect/Control solution is the website component iVIEW, which completes the solution for secure, web based control of your remote equipment. iVIEW facilitates "anytime, anywhere" control over remote assets via the Internet. A "one-stop" resource for managing user's accounts, iVIEW retrieves data from and submits directives to remote equipment, archives information into databases and reports, views data and monitors thresholds. iControl can host iVIEW, or provide an enterprise solution.



Remote Control and Data Acquisition via the Internet



## Features

### Security

- ACL password access
- Secure Sockets Layer (SSL Option)
- Unique user identification
- Authorized levels of restricted data viewing
- Authorized levels of command execution

### Database service

- Web-based interface
- User database compatibility
- Compact data typing and storage
- Fast, full-featured, easy query access

### Data monitoring and distribution

- WWW publication
  - ◆ User-definable public or authorized access
  - ◆ Home and district office access
  - ◆ Roaming field access

- Navigator and Explorer-compatible
- Display options
  - ◆ 3D visualization
  - ◆ Conventional HTML with embedded tags
- Data queries
  - ◆ Live data
  - ◆ Archived data from user query
- Data output
  - ◆ Flash results
  - ◆ Animated replay
- Data reports
  - ◆ Annotated text
  - ◆ Spreadsheet
- Custom summary reports
- Nightly backups
- Secondary "hot backup" service is available for highly reliable applications

### Remote control

- Integrated into data monitoring
- Visible feedback of current state
- Macro command capability
- Secure callback
- Command queuing and immediate dispatch

### Event notification & alarm paging service

- Contact list: pager, cell phone, email
- Online/offline status
- Data limits monitoring
- Guaranteed delivery service

### Administration and configuration

- Easy-to-use web-based forms
  - ◆ Pull down menus
  - ◆ Dynamic pop-up panels
  - ◆ Pre-filled entries
- Online documentation
  - ◆ Context sensitive help

### Automated functions

- Timing correlation and adjustment for remote iDAC units
- Database archival and cleanup

### Activity logging

- Inquiries
- Navigation errors
- Online/offline status changes
- Data-based alarm activity
- Command issuance



## System Requirements

Client Hardware	Minimum	Recommended
Computer Clock Speed	200 MHz	500 MHz
Computer RAM	32MB	96MB
Monitor Display	800x600	1280x1024
Monitor Colors	256	32-bit
Network Access Internet	56Kbps	DSL or Corporate

## Incoming Data Protocols

### Server

iLink	Proprietary protocol for efficiently transporting arbitrary data from iGATE to iVIEW
Telnet	High-performance transport for fixed-base connections
SMS	Small Message Service, economical transport for mobile connections

### Client

SOAP	Simple Object Access Protocol, web services communication protocol
WSDL	Web Services Description Language, describes available subscriptions
HTTP	HyperText Transfer Protocol, web communication protocol
HTML	HyperText Markup Language, conventional web pages
FTP	HyperText Transfer Protocol, file communication protocol

### Data Storage

SQL	Structured Query Language, language standard for interchangeable database
ODBC	Open DataBase Connectivity, high-performance intra-server transport (mirrors)

### Data Distribution

HTTP	HyperText Transfer Protocol, web communication protocol
HTML	HyperText Markup Language, conventional web pages
XML	eXtensible Markup Language, machine-parsable structured data tags
XSLT	eXtensible Stylesheet Language Transformation, converts XML to HTML
SOAP	Simple Object Access Protocol, web services communication protocol
WSDL	Web Services Description Language, describes available subscriptions
WAP	Wireless Access Protocol, mobile device communication protocol (soon)
WML	Wireless Markup Language, mobile device web pages (soon)

### Event Notification

SMTP	Simple Mail Transfer Protocol, conventional email messaging
MIME	Multipurpose Internet Mail Extensions, styled mail for embedding HTML views
SMS	Small Message Service, economical transport for mobile connections
RSS	Really Simple Syndication 2.0, syndication for events
RDF	Resource Description Framework, available syndicated services

### Security Services

SSL	Secure Sockets Layer, key distribution, certificate authorization, encryption
ACL	Access Control Layer, URL-realm user-password credentials
AES	Advanced Encryption Standard, symmetric encryption algorithm for payload data



### Online Demonstration and Trial Accounts

Visit our web site at <http://www.iControl-Inc.com/> and click the link under Products/Online Demonstration.



### Corporate Headquarters

2025 Gateway Place, Suite 345, San Jose, CA 95110  
 Tel: 408.436.8014. Fax: 408.436.8742  
[www.iControl-Inc.com](http://www.iControl-Inc.com)